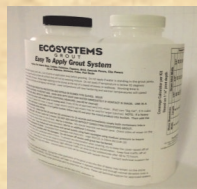
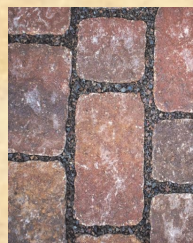


ECOSYSTEMS GROUT

Easy To Apply Grout System



- Maintains positioning of stones
- High compressive strength, flexible
- Suitable for vehicular loads
- Permanent alternative to polymeric sand
- Quick and easy mixing process
- Mixes with a variety of aggregates and sand
- Can be used on joint widths 3/16" to 12"
- No final cleaning or acid washing required, non hazing
- Self-leveling and self-compressing
- Resistant to chemicals, ideal for pool decks, UV resistant
- Freeze/thaw properties and resistant to de-icing salt
- Permeable grout, LEED/Green Building credits possible
- Resistant to weeds and digging insects
- Easy to clean, can be pressure washed
- Excellent price/performance ratio



#89 Granite



Jellybean Glass



#20 Sand



Mexican Pebble



Dark Sand



River Rock

APPLICATION



1. Wet Inside of Mixer



2. Add Sand



3. Shake Bottles



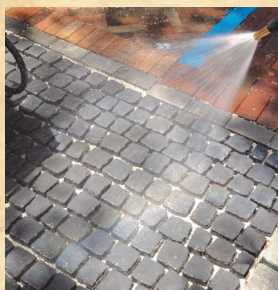
4. Pour Into Container



5. Mix Parts A & B



6. Pour Into Mixer



7. Mist Stones



8. Squeegee into Joints



Timeless Style -
Advanced
Design

www.cobblesystems.com



www.ecosystemsgROUT.com

Sales: 877-238-8663

Email: info@ecosystemsgROUT.com



Visit our website for more detailed instructions

Toll Free: 877-238-8663 * Fax: 407-843-5753

Email: info@cobblesystems.com



OLD WORLD LOOK - NEW WORLD VALUE



Driveways

Cobble Systems is a unique and patented system creating the look of handcrafted cobblestone. **Cobble Systems** consists of individually cast cobblestones connected by a cast-in grid, that installs in seconds. This amazingly simple system is comprised of patterned sheets - **Fans, Circles and Straights** - that link together, providing limitless design possibilities. In addition, a permeable solution can be achieved for required applications through the use of various joint materials including our unique **EcoSystems Grout**.



Pool Decks

Pattern Styles



Straight Pattern - SP



Fan Pattern - FP



Half Circle - HC



Thin Straight - TS

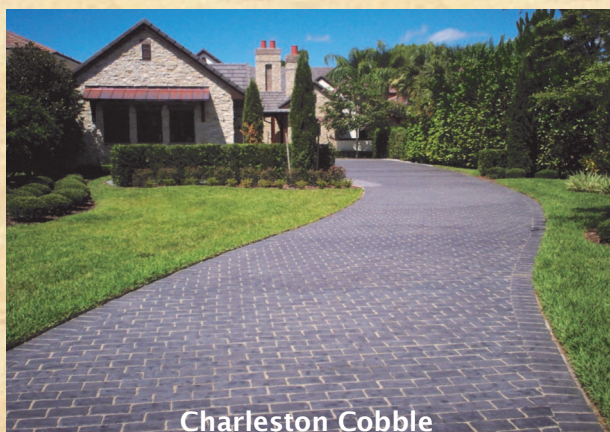


Charleston Cobble - CC



Cobble Block - CB

Pattern CODE	* Dimensions Length - Width - Height			Coverage Square Ft.	Weight Approx.	Pieces Per Pallet
CC	8 ³ / ₈	5 ³ / ₈	2 ³ / ₈	.3125	7.2 lb.	360
SP	48"	16"	1 ⁵ / ₈	5	75 lb.	36
FP	48"	16"	1 ⁵ / ₈	5	75 lb.	36
HC	48"	16"	1 ⁵ / ₈	7.5	110 lb.	24
TS	24"	16"	3/ ₄	2.5	22 lb.	120
CB	12"	6"	3 ³ / ₄	.5	19 lb.	140



Charleston Cobble



Commercial Applications

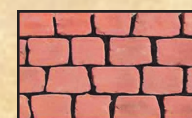


Interior Applications

Standard Colors



Charcoal

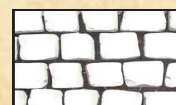


Rustic Red



Chocolate

Custom Colors



White



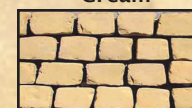
Cream



Sunburst



Wheat



Mesa Brown



Key West



Terracotta



White Granite



www.cobblesystems.com
"Like" us on Facebook:
www.facebook.com/CobbleSystems

100 West Livingston Street
Orlando, FL 32801

Proud Members of:

